

HYDROGRAPHIC NATIONAL REPORT OF LITHUANIA

1. Hydrographic Office

Hydrographic activities are carried out by the Hydrographic Division (HD) of Waterborne Transport Department of Lithuanian Transport Safety Administration (LTSA - <https://ltsa.lrv.lt/>).

Ministry of Transport and Communications is the founder of LTSA. The institution is funded from state budget.

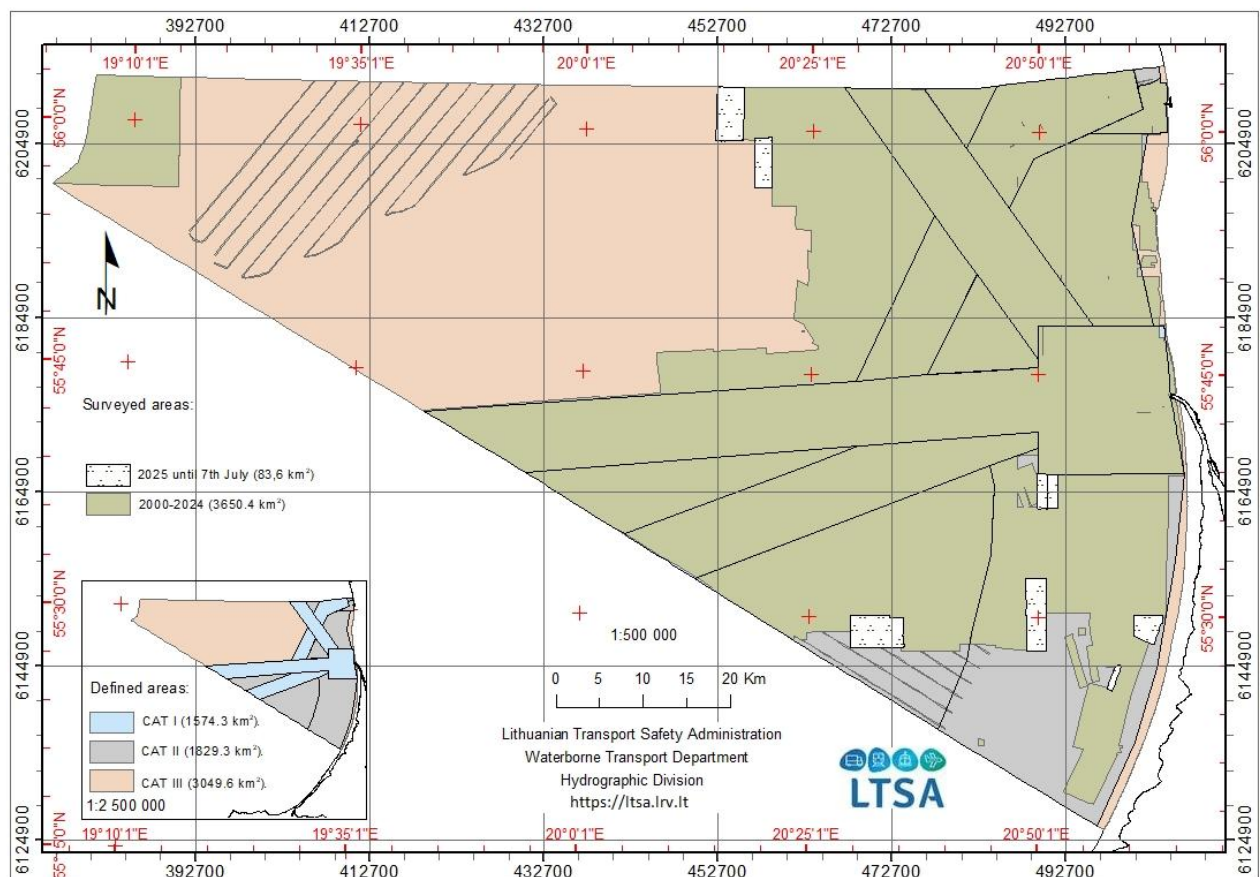
2. Surveys

For hydrographic surveying HD has a 20 m long catamaran type survey vessel “VARŪNA” equipped with Kongsberg EM 2040C multibeam echosounder.

Currently surveys are conducted according to HELCOM-BSHC harmonized hydrographic resurvey scheme in CAT II and CAT III areas.

Nautical surveying is carried out according to the IHO S-44 standard and the data is used in nautical charting.

Lately noticed that magnitude of GNSS disturbances gradually increasing and when surveying, started to experience random significant GNSS disturbances, which made positioning difficult and as a result there was a case when surveying was not possible and had to be cancelled.



Up to July 2025 in total an area of **1572 km²** of main routes and approaches (CAT I) and **1437 km²** of CAT II was surveyed.

In **2025** until 7th of July there was surveyed an area of **83.6 km²** (see fig. above).

3. New charts & updates:

ENCs

Overview of ENCs can be found on interactive chart server (<https://hydro.eltsa.lt>) (see fig. below).
Lithuanian waters are covered by seven ENCs in four navigational purpose bands:

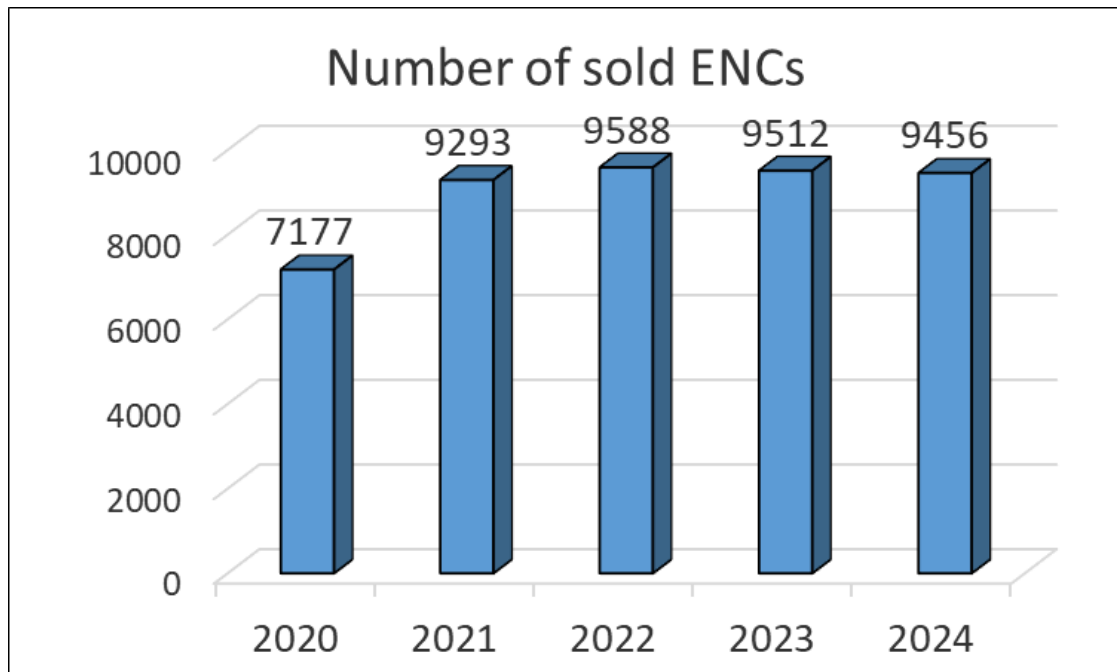
Navigational purpose	Chart No.
<i>Overview</i>	LT110000
<i>General</i>	LT282001
<i>Approach</i>	LT465010
<i>Approach</i>	LT465020
<i>Harbour</i>	LT562510
<i>Harbour</i>	LT562520
<i>Berthing</i>	LT660710



Two Coastal ENCs are in preparation (LT381001 and LT381002).

Chart Distribution:

ENCs are distributed through PRIMAR. In 2024 **9456 ENCs** were distributed (see fig. below).



RNCs

RNCs are not produced.

INT charts

INT charts are not produced.

National paper charts

Overview of paper charts can be found on interactive chart server (<https://hydro.eltsa.lt>) (see fig. below). Lithuanian waters are covered by seven paper charts in five navigational purpose bands:

Navigational purpose	Chart No.
<i>General</i>	LT282001
<i>Coastal</i>	LT381001
<i>Approach</i>	LT465010
<i>Approach</i>	LT465020
<i>Harbour</i>	LT562510
<i>Harbour</i>	LT562520
<i>Berthing</i>	LT660710

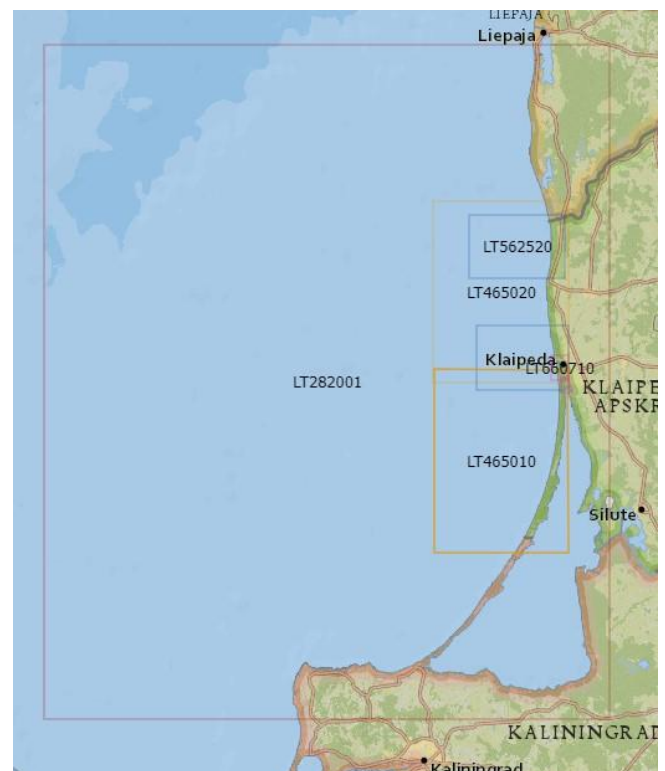
Paper charts are produced from the same database as ENC's. All seven paper charts are produced. Paper charts are distributed for personal use cost free by filling in a request form which can be found on the indicated portal in section publications.

Other charts

Due to participation in Baltic Sea e-Nav project, small craft charts preparation postponed.

S-100 products

In the HD internally studying, testing and preparing for the S-101, S-102, S-104 and S-111



production. S-101 and S-102 test cells have been generated and passed to Primar and Baltic Sea e-Nav project for testing. Regarding S-104 and S-111 data sets, Lithuanian Hydrometeorological Service was contacted, they are evaluating solution how they will proceed (pass the data to HD or provide the final product). No final decision on the matter yet.

4. New publications & updates:

New Publications

New publication *none*.

Updated Publications

Updated publication *LIST OF ATON LIGHTS IN LITHUANIAN WATERS. BALTIC SEA. 2025*;

Updated publication *Shipping Regulations*;

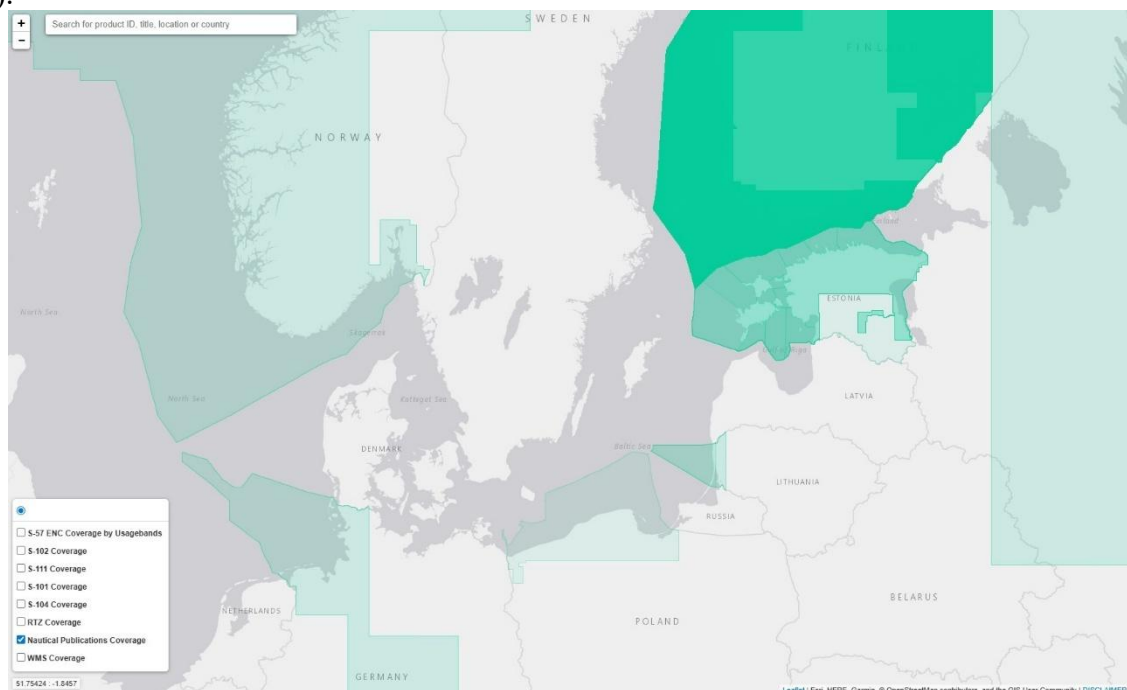
Publication *Notices to Mariners* is issued on a monthly basis.

Means of delivery

All publications can be found in digital form on the LTSA web page:

<https://hydro.eltsa.lt/portal/apps/sites/#/hidrografine-veikla-1/pages/leidiniai>

Also nautical publications are distributed through PRIMAR (see screenshot of 17 July 2025 below).



5. MSI

Existing infrastructure for MSI dissemination.

National GMDSS VHF network along coastline for local Navigational Warnings. Service is provided by Lithuania's Navy MRCC Klaipeda on VHF in Lithuanian and English.

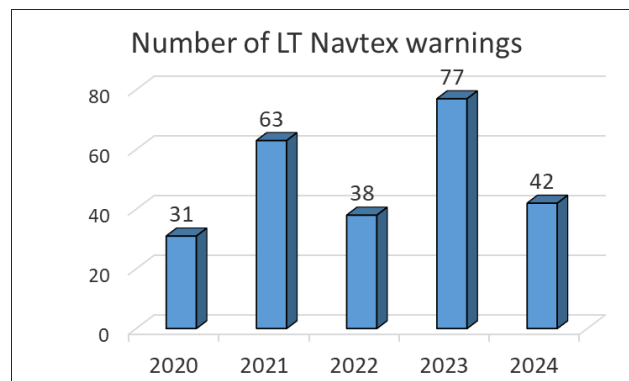
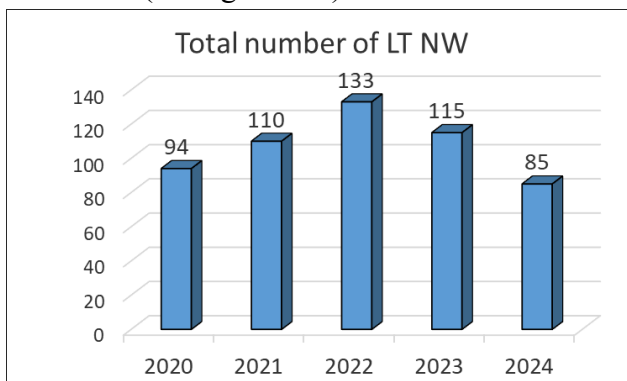
NAVTEX messages are transmitted by NAVAREA 1 Baltic sea subarea Coordinator.

All valid Lithuanian navigational warnings can be found online on interactive web portal:

<https://hydro.eltsa.lt/nw/en.html>

Statistics on work of the National Coordinator

In 2024 85 Navigational Warnings were issued and 42 NW of them were disseminated through NAVTEX (see fig. below).



New infrastructure in accordance with GMDSS Master Plan

GMDSS network covering areas A1 and A2. No new construction during last Year.

6. C-55

Status of hydrographic survey of waters out to the limits of the EEZ:

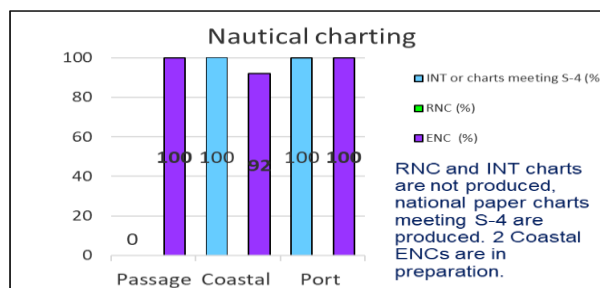
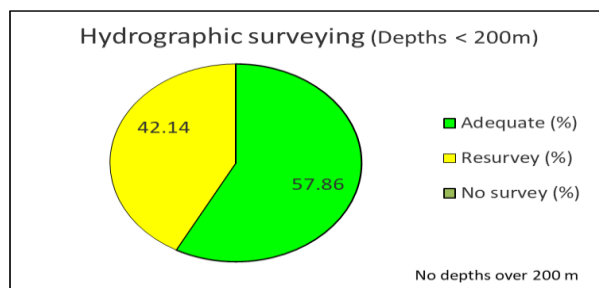
Status of surveys	Adequat (%)	Resurvey (%)	No survey (%)
Depths 0 - 200m	57.86	42.14	0
Depths > 200m	0	0	0

Status of nautical charting within the limits of the EEZ:

Chart coverage	Passage (%)	Coastal (%)	Port (%)
INT or other paper charts meeting S-4	0	100	100
RNC	0	0	0
ENC	100	92	100

Status of Paper Charts

Paper charts with depths in metres (%)	100
Paper charts referenced to a satellite datum (%)	100



Navigational information (S-53):

MSI	Y/N	Comments on MSI	
Local warning	YES	can be found on https://hydro.eltsa.lt/nw/en.html	
Coastal warning	YES	Transmitted by NAVAREA I Baltic Sea Sub-area Coordinator. Can be found on https://hydro.eltsa.lt/nw/en.html	
Nav warning	NO	Transmitted by NAVAREA I Baltic Sea Sub-area Coordinator.	

Port warning	YES	can be found on https://hydro.eltsa.lt/nw/en.html	
--------------	-----	---	--

GMDSS implementation (IMO Publication 970 - GMDSS Handbook)

GMDSS	Y/N	Comments on GMDSS
Master Plan	YES	
Area A1	YES	MRCC Klaipeda
Area A2	YES	MRCC Klaipeda
Area A3	NO	
NAVTEX	YES	Transmitted by NAVAREA I Baltic Sea Sub-area Coordinator.
SafetyNet	NO	

7. Capacity Building

Offer of or demand for Capacity Building

Nothing to report

Training received, needed, offered

Nothing to report

Status of national, bilateral, multilateral or regional development projects with hydrographic component

Participating as associated organization in the multilateral project „Shared waters – Same standards. Baltic Sea Partnership for Future Navigation – Baltic Sea e-Nav“.

8. Oceanographic activities

Carried out by Environmental Protection Agency (EPA): <https://aaa.lrv.lt/?lang=en>

9. Spatial data infrastructures

Status of MSDI

The Maritime Spatial Planning (MSP) in Lithuania is included into the national legislation regulating spatial planning – Law on Territorial Planning and its secondary legal acts. The Ministry of Environment is coordinating Maritime Spatial Planning. The latest maritime spatial plan was integrated into the Comprehensive Territorial Plan of the Republic of Lithuania and was approved by the Parliament and the Government on 29 September 2021 and is a legally binding document obligatory for the state governmental institutions. Part of the marine space (up to 20 m isobaths) also falls under the regulation of the Law of the Coastal Strip. MSP applies to the entire marine area of Lithuania including territorial waters and the exclusive economic zone (EEZ). A complete SEA for the MSP was elaborated including national and transnational consultations with Lithuanian stakeholders as well as with Sweden and Latvia (summarized information source: VASAB MSP report Lithuania). Websites with information on MSP:

- <https://www.bendrasisplanas.lt/#>
- <https://maps.planuojustatau.lt/map/main/>
- <https://basemaps.helcom.fi/>

Relationship with the NSDI

MSDI is part of the NSDI.

Involvement in regional or global MSDI efforts

Nothing to report.

National implementation of the Shared Data Principles – including any national data policy and impact on marine data

Marine and other spatial data are shared through national Spatial Information Infrastructure portal (<https://www.geoportal.lt/geoportal/en/web/en>). Lithuanian bathymetric model published in 500 m resolution on the LTSA portal and is available on EMODnet portal as well since June 2024.

MSDI national portal

Public institution Construction Sector Development Agency (PI „SSVA“) is responsible for update and distribution of the national official geographic databases. PI „SSVA“ is in charge of management and development of the Lithuanian Spatial Information Infrastructure portal (<https://www.geoportal.lt/geoportal/en/web/en>), which is the place also for marine spatial data.

10. Innovation

Use of new technologies

Nothing to report.

Risk assessment

Risk factors table elaborated.

Policy matters

Nothing to report.

11. Other activities

Participation in IHO meetings

Participating as observer member nation in IHO IENWG working group.

Meteorological data collection

Carried out by Lithuanian Hydrometeorological Service under the Ministry of Environment:
<http://www.meteo.lt/en/>

Geospatial studies

Evaluating possibilities to obtain commercially available nearshore bathymetry from satellite imagery.

Preparation for responses to disasters

Coordinated by MRCC of Lithuanian Navy.

Environmental protection

Carried out by Environmental Protection Agency (EPA - <https://aaa.lrv.lt/?lang=en>) and Environmental Protection Department under the Ministry of Environment (EPD - <https://aad.lrv.lt/>).

Engagement with the Maritime Administration

Maritime Administration's functions are carried out by LTSA.

Aids to Navigation matters

In port AtoNs managed by Port Authority. Marine AtoNs managed by LTSA and other bodies depending on ownership.

Magnetic and gravity surveys

Not performed by HD. Coordinated by National Land Service (NLS) under the Ministry of Agriculture of the Republic of Lithuania, performed by Institute of Geodesy of VILNIUS TECH University.

International engagements

Participating as associated member nation in BSHC and its working groups (MWG, BSICCWG, BSMSIWG, CDWCWG). Also participating in PRIMAR TEWG working group.

12. Conclusions

During the period from last BSHC Conference Hydrographic activities were carried out quite successfully, although encountered some GNSS disturbances, which hampered hydrographic surveying.

DETALŪS METADUOMENYS	
Dokumento sudarytojas (-ai)	Lietuvos transporto saugos administracija 188647255, Švitrigailos g. 42, LT-03209 Vilnius
Dokumento pavadinimas (antraštė)	LIETUVOS NACIONALINĖ HIDROGRAFIJOS ATASKAITA BSHC30 KONFERENCIJAI VYKSIANČIAI 2025 M. RUGSĖJO 23-24 D. RYGOJE (LATVIJA).
Dokumento registracijos data ir numeris	2025-07-24 Nr. 15B-6613
Dokumento gavimo data ir dokumento gavimo registracijos numeris	–
Dokumento specifikacijos identifikavimo žymuo	ADOC-V1.0
Parašo paskirtis	Pasirašymas
Parašą sukūrusio asmens vardas, pavardė ir pareigos	Emilis Tertelis, pavaduojama Mindaugas Zakarauskas, Vandens transporto departamento Hidrografijos skyrius
Sertifikatas išduotas	EMILIS TERTELIS LT
Parašo sukūrimo data ir laikas	2025-07-24 12:10:33 (GMT+03:00)
Parašo formatas	XAdES-T
Laiko žymoje nurodytas laikas	2025-07-24 12:10:50 (GMT+03:00)
Informacija apie sertifikavimo paslaugų teikėją	SK ID Solutions EID-Q 2021E, SK ID Solutions AS EE
Sertifikato galiojimo laikas	2025-01-20 21:04:14 – 2030-01-20 23:59:59
Informacija apie būdus, naudotus metaduomenų vientisumui užtikrinti	"Registravimas" paskirties metaduomenų vientisumas užtikrintas naudojant "RCSC IssuingCA-2, VI Registru Centras - i.k. 124110246 LT" išduotą sertifikatą "Dokumentų valdymo sistema Avilys, Lietuvos transporto saugos administracija, į.k. 188647255 LT", sertifikatas galioja nuo 2024-12-18 13:53:07 iki 2027-12-18 13:53:07
Pagrindinio dokumento priedų skaičius	–
Pagrindinio dokumento pridedamų dokumentų skaičius	–
Priedamo dokumento sudarytojas (-ai)	–
Priedamo dokumento pavadinimas (antraštė)	–
Priedamo dokumento registracijos data ir numeris	–
Programinės įrangos, kuria naudojantis sudarytas elektroninis dokumentas, pavadinimas	Dokumentų valdymo sistema Avilys, versija 3.5.60
Informacija apie elektroninio dokumento ir elektroninio (-ių) parašo (-ų) tikrinimą (tikrinimo data)	Atitinka specifikacijos keliamus reikalavimus. Visi dokumente esantys elektroniniai parašai galioja (2025-07-24 12:44:19)
Paieškos nuoroda	–
Papildomi metaduomenys	Nuorašą suformavo 2025-07-24 12:44:19 Dokumentų valdymo sistema Avilys